

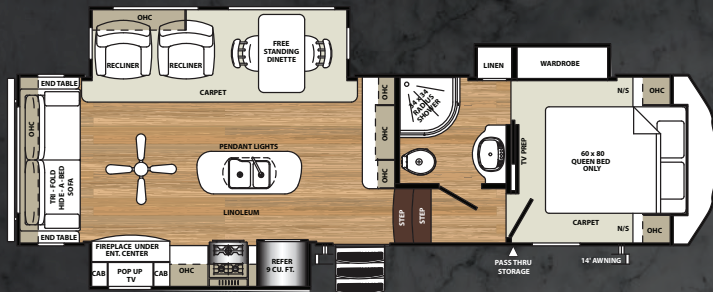
HT FIFTH WHEELS

SIERRA

HT



3250IK



BREATHTAKING.

Sierra's 3250IK fifth wheel floorplan has optimized every square inch to provide you a luxury coach in a lightweight unit. It's large island kitchen featuring solid surface countertops and designer faucet provides an ideal space for food preparation. This unit comes standard with a pop up 40" flatscreen tv directly across from the recliners or optional heated and massage theater seats.

WALNUT DECOR



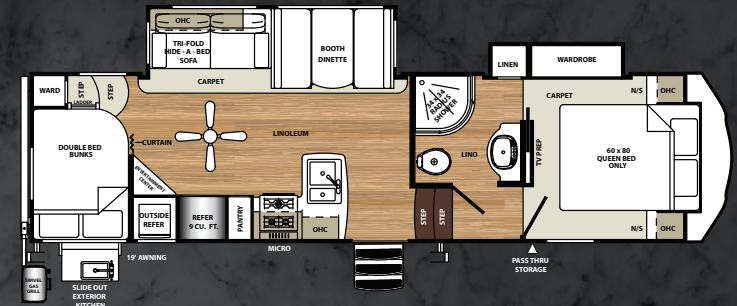




INNOVATIVE.

Sierra's 3275DBOK floorplan offers maximized sleeping space in a beautifully laid out design. With two oversized double bed bunks in the rear and a full queen size mattress up front this floorplan accommodates many needs. This unit offers full wardrobes in the front bedroom as well as the rear bunk room. Let's also not forget that this floorplan comes standard with an outside kitchen. A must for enjoying the outdoor scenery.

3275DBOK



WALNUT DECOR



INTERIOR FEATURES



A High rise faucet with undermount sink and pull out sprayer

B The upgraded and intricately detailed slide-out fascia

C Theater seats with LED lighting.

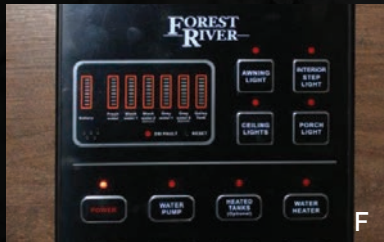
D Full extension, soft close ball bearing drawer guides

E The electric fireplace warms and is a great focal point for the living area

F QAV Control - One Touch control allows you to do everything from operating your awning and lights, to monitoring holding tank levels

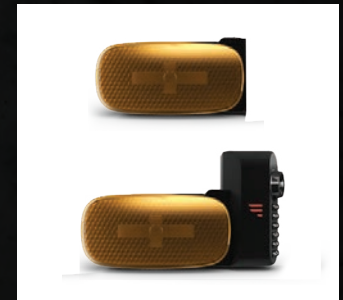
G Enjoy the comfort of home with our exclusive Denver mattress

H Flatscreen LED HDTV with premium soundbar and DVD player



FREE SIERRA HT PACKAGE

(LIMITED TIME OFFER)



- Roller shades throughout
- King WiFi extender
- Backup camera prep
- Side security camera prep

EXTERIOR FEATURES

GOURMET KITCHEN

The Sierra gourmet kitchen includes a 20 cu. ft. stainless steel French door refrigerator with freezer, microwave and upgraded range.



EXTERIOR KITCHEN

The SIERRA HT 3275DBOK exterior kitchen includes: bumper mounted gas grill, sink with hot and cold water and durable exterior countertop.

A The color matched fiberglass front cap features high definition graphics and LED safety lights.



B Gel coated fiberglass protects from UV rays and prevents yellowing and cracking.



C Folding, radiused triple entry step.



D SIERRA's convenient outside lighted docking station.



E 2 quick connect spray ports (one on each side) are great for easy clean up.



F Power front jacks with quick release snap pins.



G Contemporary aluminum rims with 15" D-rated radial tires.



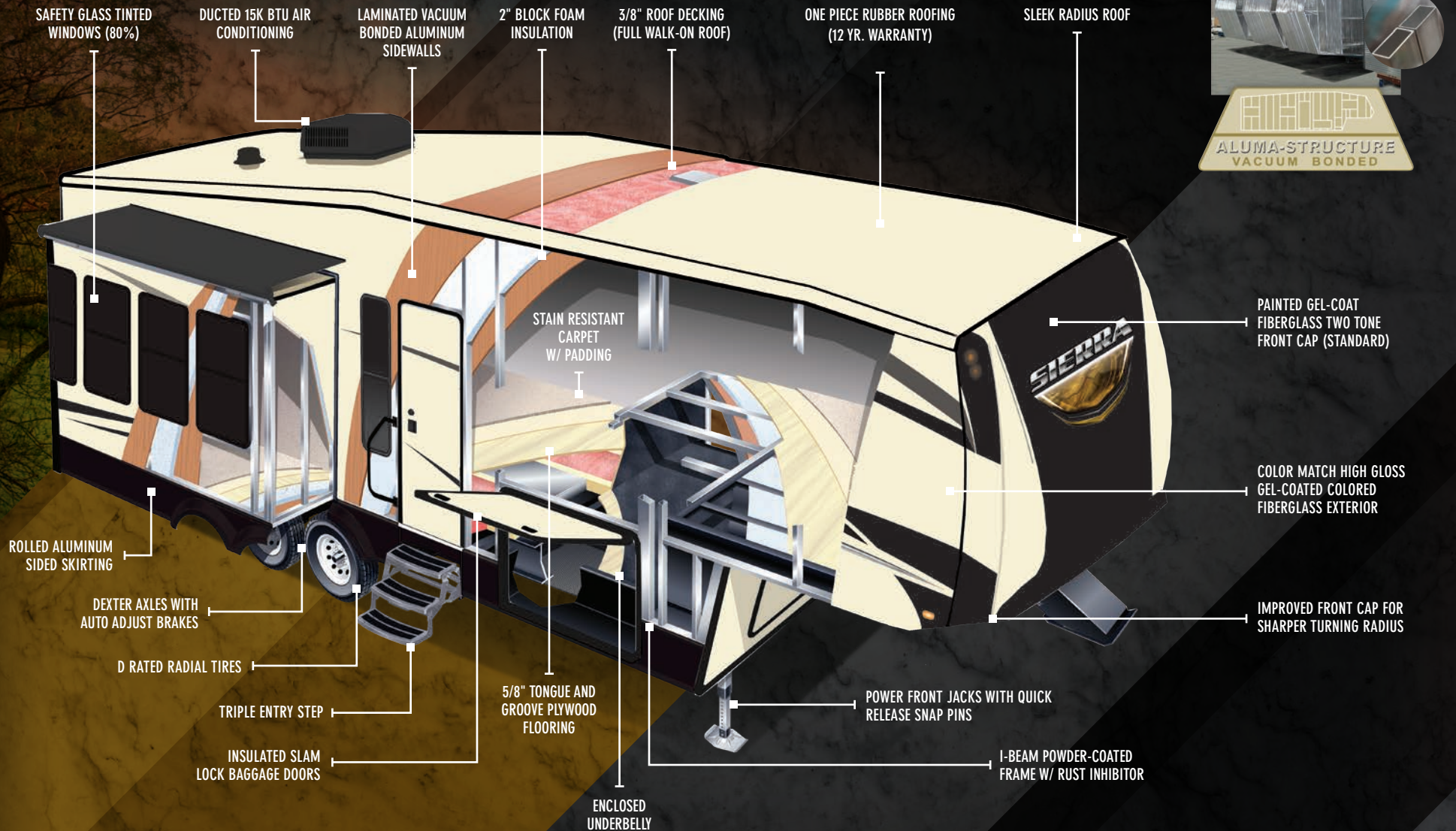
H Enclosed underbelly protects your coach. improved airflow allows for a sturdy ride.



CONSTRUCTION

THE SIERRA SUPERSTRUCTURE

The SIERRA has a Welded Aluminum Superstructure that is regarded as the Industry's finest, pictured below is the heavier gauge aluminum tubing used by SIERRA vs. the competitions lighter gauge aluminum.



BISQUE DECOR

WALNUT DECOR

SIERRA DECORS, STANDARDS & OPTIONS

EXTERIOR FEATURES

- Color match high gloss gel coated colored exterior fiberglass
- Painted two tone aerodynamic fiberglass front cap with improved turning radius
- Enclosed and heated dump valves
- Large tinted windows with 80/20 UV prohibitor
- Radius triple entry step
- "One Touch" Dometic® electric awning w/LED light strip
- Power front jacks with spring loaded snap pins
- 15" Radial tires-D Rated
- Automotive-style fender skirts
- Hitch light
- Porch light with interior switch
- 30 lb. double LP tanks with auto change over
- 2 exterior speakers
- Rain gutters with extra long drip spouts (prevents black streaking)
- Insulated heavy duty slam lock baggage doors
- Exterior foldable grab handle
- Unobstructed pass thru area
- Upgraded aluminum rims
- 4,400 Lb. Axles
- Friction hinge entry door

INTERIOR FEATURES

- Stainless steel appliances
- Beauflor® rustic wood plank linoleum
- Decorative backsplash
- Two color coordinated interiors (Bisque, Walnut)
- Soft close full extension drawer glides
- Stainless steel under mounted kitchen sink
- LED lighting throughout
- Solid surface countertops
- Recessed residential lighting
- Accent paneling in slideouts
- Accent lighting over dinette
- Mocha accent crown molding over kitchen cabinets
- Extra large picture windows throughout
- Vented side windows in slideouts
- TV antenna with booster
- Solid wood drawer fronts with birch sides
- Upgraded raised panel cabinet doors with designer rails
- Bedroom slideout fascia
- Denver pillow top mattress
- Teddy Bear® bunk mats
- 40" flatscreen TV (32" std. in 3275DBOK)
- Premium soundbar with built in DVD player
- Designer window treatment accented per decor
- 9 Cu. Ft. stainless refrigerator
- Ceiling fan
- Tri-fold hide-a-bed sofa
- Residential stain resistant carpet
- Center mounted A/C unit for even cooling
- Quilted bedspread

APPLIANCES/SYSTEMS

- High Performance Dometic® 15K A/C (second A/C prep)
- 9 cu. ft. refrigerator
- Digital thermostat for living room and A/C
- Floor ducted 35,000 BTU furnace
- OTR stainless steel microwave
- Three burner high output range with 22" oven
- Interior monitor panel for holding tanks
- Satellite and cable hookup with RG-6 cable for high quality picture
- Porcelain foot flush toilets
- 10 Gal. DSI water heater
- 65 Amp converter
- EZ Breeze® power fan in bathrooms

CONSTRUCTION

- Welded aluminum-framed, vacuum bonded laminated superstructure
- 3/8" roof decking (full walk-on roof)
- Cambered powder coated frame with rust prohibitor
- Fully enclosed underbelly
- 5" truss roof rafters
- R-10E sidewall construction
- Laminated sidewalls
- Laminated slideout walls
- Laminated floors

FOR YOUR SAFETY

- Smoke alarm
- Fire extinguisher
- Breakaway switch (battery hook-up required)
- Dead-bolt lock on entry door
- LP/CO2 gas detector
- Fire escape windows

POPULAR OPTIONS

- Four point electric level up
- Free standing dinette IPO booth dinette (3275dbok)
- Theater seating IPO recliners (3250IK)
- Second air conditioner in bedroom (ducted)
- Heated holding tanks (12V)
- R-38e roof & all floors insulation
- Electric stabilizer jacks - 1 pair
- Roto flex hitch pin
- Central vacuum
- Slide room awnings (all slides)
- Spare tire kit (15")
- Roof ladder
- 2 Folding dinette chairs

OPTIONAL POLAR TECH PACKAGE

- Thermal pane windows
- Heated holding tanks
- R-38E roof & all floors insulation
- 40K BTU furnace

SIERRA HT LUXURY PACKAGE

- 9 Cu. Ft. Stainless refer
- Stainless appliance package
- Denver pillowtop mattress
- 30" OTR microwave
- Kitchen backsplash
- Soft close residential drawers & cabinet doors
- Docking station
- Color matched gelcoated fiberglass exterior
- 40" Flat screen television (most models)
- Premium sound bar with DVD
- Power fan in bathroom(s)
- Tri fold hide-a-bed sofa
- "One Touch" Dometic electric awning w/LED light strip
- LED interior lighting throughout
- Slam lock baggage doors
- 15K air conditioner w/prep for second A/C
- Residential kitchen faucet
- Aluminum wheels
- Water filter system
- Rustic wood Beauflor™ flooring
- Aerodynamic two tone painted fiberglass front cap
- 10 Gal DSI water heater

FREE SIERRA HT PACKAGE (LIMITED TIME OFFER)

- Roller shades throughout
- King WiFi extender system
- Back up camera prep
- Security camera prep

SIERRA

HT

SIERRA

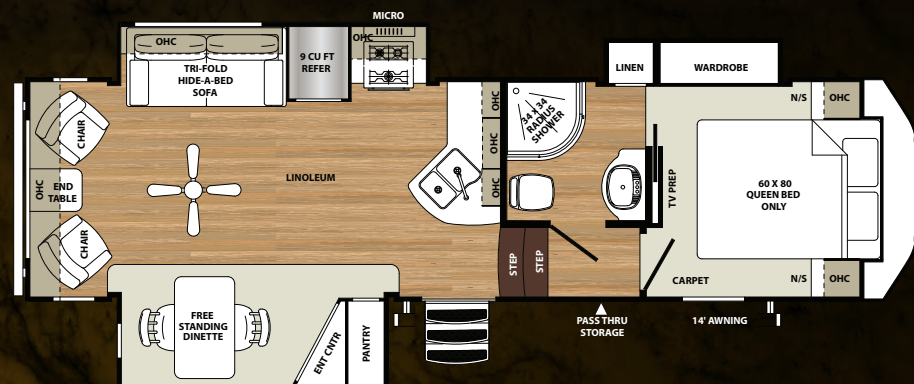
FLOORPLANS

HT

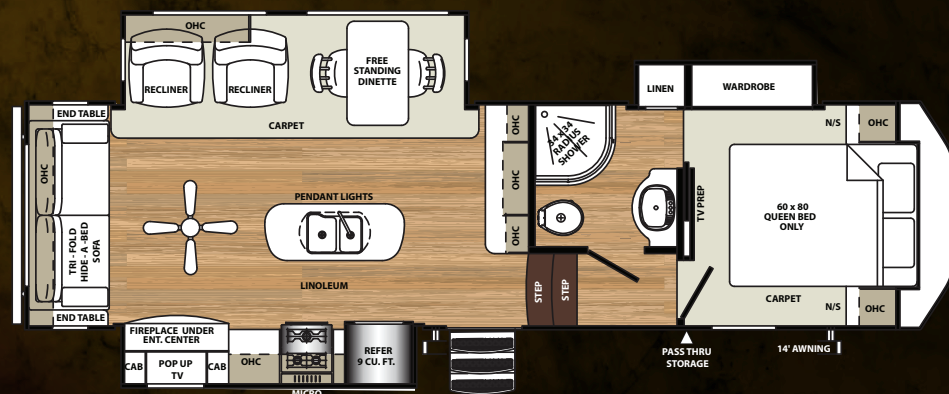


EXTERIOR KITCHEN

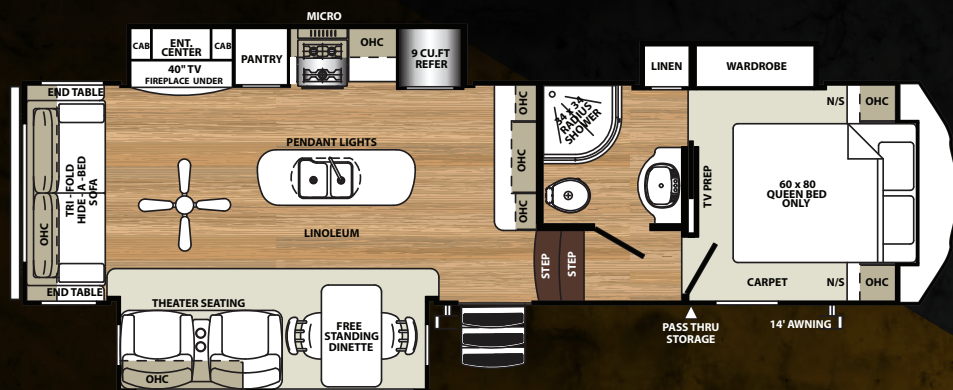
The SIERRA HT 3275DBOK exterior kitchen includes: bumper mounted gas grill, sink with hot and cold water and durable exterior countertop.



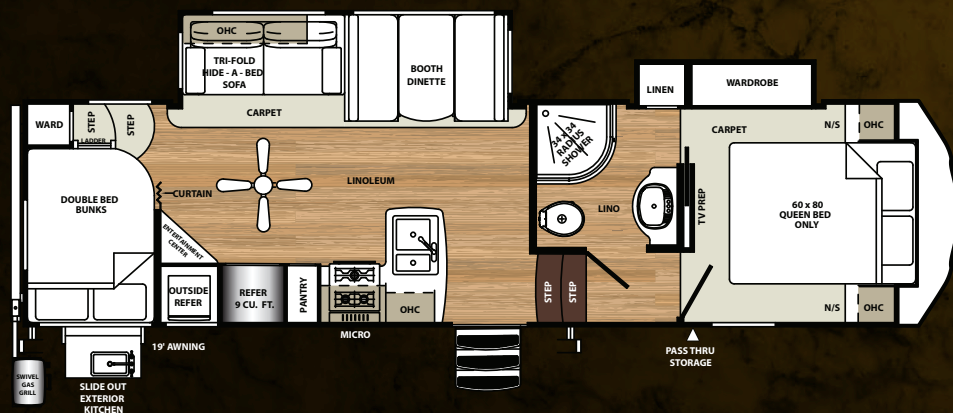
2850RL



3250IK



2950TRIK



3275DBOK



SPECIFICATIONS

MODEL	2850RL	2950TRIK	3250IK	3275DBOK
HITCH	1,465	1,445	1,502	1,271
UVW	7,868	8,588	8,354	8,155
GVWR	10,000	10,000	10,000	10,000
CARGO	2,132	1,412	1,646	1,845
LENGTH*	31'5"	32'11"	32'1"	32'4"
HEIGHT	12'10"	12'10"	12'10"	12'10"
AWNING	14'	14'	14'	19'
GRAY	60	60	60	60
BLACK	30	30	30	30
FRESH	47	47	47	47

*LENGTH BUMPER TO HITCH

Please see back cover for more information regarding weights.



PRE-DELIVERY INSPECTION FACILITY

20,000 square feet of quality assurance. The bare essentials for a premium product. This state-of-the-art facility gives immediate daily feedback to production for quality assurance in every unit built.

FREE MEMBERSHIP
to Forest River Owners' Group



www.ForestRiverBuyLocal.com

GVWR (Gross Vehicle Weight Rating) - is the maximum permissible weight of the unit when fully loaded. It includes all weights, inclusive of all fluids, cargo, optional equipment and accessories. For safety and product performance do NOT exceed the GVWR.

GAWR (Gross Axle Weight Rating) - is the maximum permissible weight, including cargo, fluids, optional equipment and accessories that can be safely supported by a combination of all axles.

UVW (Unloaded Vehicle Weight)* - is the typical weight of the unit as manufactured at the factory. It includes all weight at the unit's axle(s) and tongue or pin and LP Gas. The UVW does not include cargo, fresh potable water, additional optional equipment or dealer installed accessories.

*Estimated Average based on standard build optional equipment.

CCC (Cargo Carrying Capacity)** - is the amount of weight available for fresh potable water, cargo, additional optional equipment and accessories. CCC is equal to GVWR minus UVW. Available CCC should accommodate fresh potable water (8.3 lbs per gallon). Before filling the fresh water tank, empty the black and gray tanks to provide for more cargo capacity.

** Estimated average based on standard build optional equipment

Each Forest River RV is weighed at the manufacturing facility prior to shipping. A label identifying the unloaded vehicle weight of the actual unit and the cargo carrying capacity is applied to every Forest River RV prior to leaving our facilities.

The load capacity of your unit is designated by weight, not by volume, so you cannot necessarily use all available space when loading your unit.

ALL INFORMATION CONTAINED IN THIS BROCHURE IS BELIEVED TO BE ACCURATE AT THE TIME OF PUBLICATION. HOWEVER, DURING THE MODEL YEAR, IT MAY BE NECESSARY TO MAKE REVISIONS AND FOREST RIVER, INC., RESERVES THE RIGHT TO MAKE ALL SUCH CHANGES WITHOUT NOTICE, INCLUDING PRICES, COLORS, MATERIALS, EQUIPMENT AND SPECIFICATIONS AS WELL AS THE ADDITION OF NEW MODELS AND THE DISCONTINUANCE OF MODELS SHOWN IN THIS BROCHURE. THEREFORE, PLEASE CONSULT WITH YOUR FOREST RIVER DEALER AND CONFIRM THE EXISTENCE OF ANY MATERIALS, DESIGN OR SPECIFICATIONS THAT ARE MATERIAL TO YOUR PURCHASE DECISION.



SIERRA
HT



Learn More

Scan this barcode using a QR Reader on your smart phone to learn more about Forest River.



A Berkshire Hathaway company.

Forest River, Inc.
2012 Century Dr.
Goshen, IN 46528
(574) 389-4600
www.forestriverinc.com/Sierra
www.forestriveraccessories.com

YOUR LOCAL SIERRA DEALER